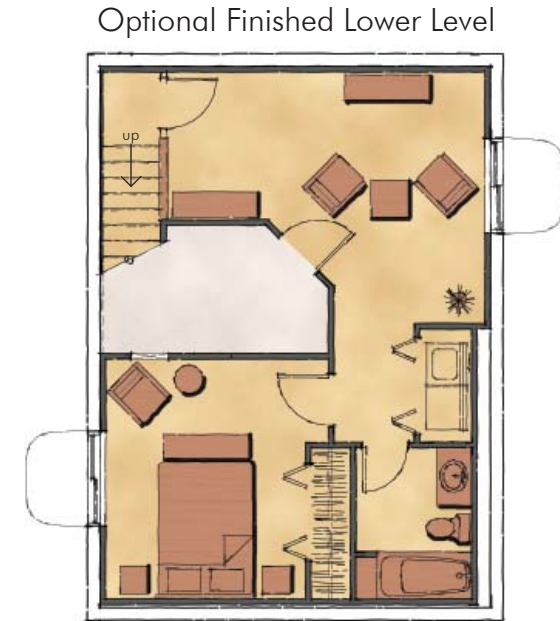
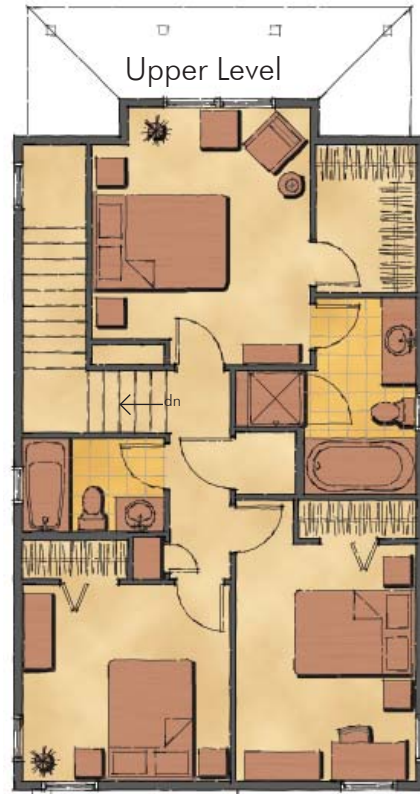
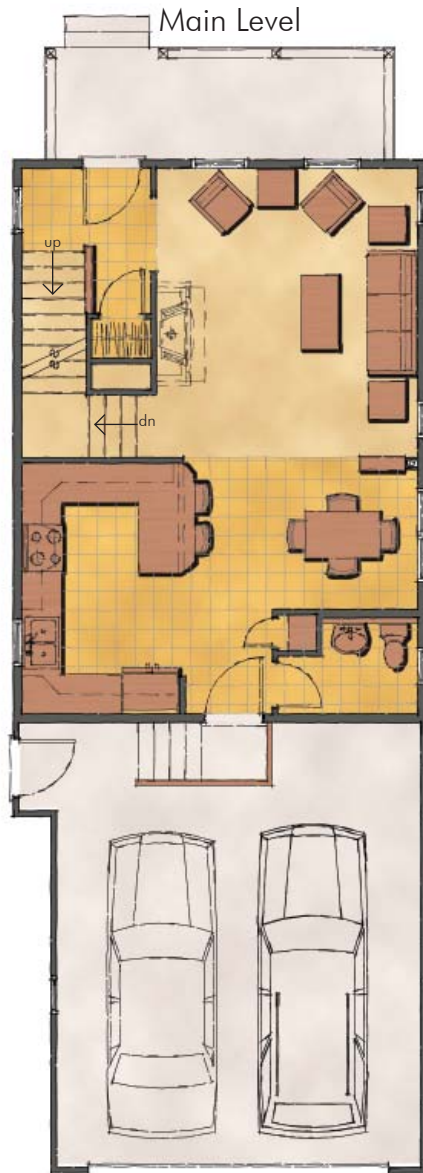


Victorian



Foursquare






Main Floor:	660 sq. ft.
Upper Level:	776 sq. ft.
Total:	1,436 sq. ft.

Optional Lower:	572 sq. ft.
Total with Lower:	2,008 sq. ft.

3 Bedrooms (opt 4<sup>th</sup>)  
3 Bathrooms (opt 4<sup>th</sup>)

 Copyright © 2008. This information is for illustration only and is not part of a legal contract. All dimensions are approximate. Floor plans, room sizes, exteriors and landscaping may vary depending on the elevation and options selected. Changes may be made without notice. Please Contact a sales representative for more details.

